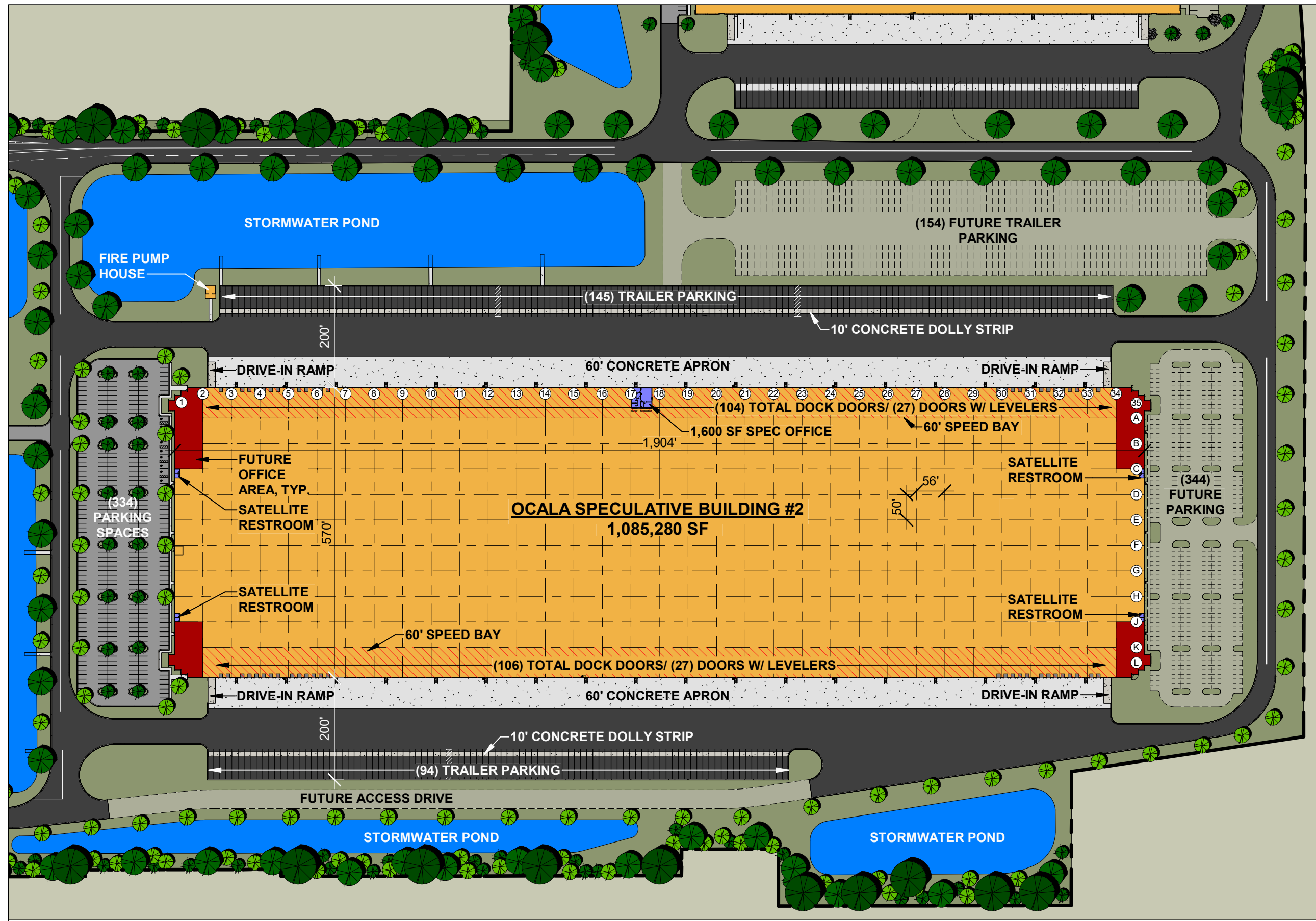



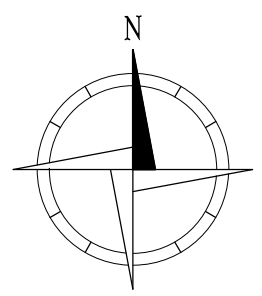


NOTICE: THIS DRAWING IS THE PROPERTY OF MCA ARCHITECTURE INC. AND IS FURNISHED WITH THE CONDITION THAT IT IS NOT TO BE CHANGED WITHOUT THE WRITTEN AUTHORIZATION OF MCA ARCHITECTURE INC. FURTHERMORE, THIS DRAWING IS NOT TO BE COPIED, REPRODUCED OR USED WITHOUT WRITTEN PERMISSION FROM MCA ARCHITECTURE INC.
 © 2022 MCA ARCHITECTURE 11/7/2022 1:08:38 PM



NOTES	
CAR PARKING	
WEST PARKING LOT	334
FUTURE EAST PARKING	344
TOTAL POTENTIAL	678
TRAILER PARKING	
PLAN NORTH	145
PLAN SOUTH	94
TOTAL	239
FUTURE SPACES	154
TOTAL POTENTIAL	393
*TRAILER PARKING SIZED AT 12' WIDE X 55' DEEP	
DOCK DOORS	
PLAN NORTH W/OUT LEVELERS	77
PLAN NORTH W/ LEVELERS	27
PLAN SOUTH W/OUT LEVELERS	79
PLAN SOUTH W/ LEVELERS	27
TOTAL	210
WAREHOUSE LIGHTING	
30 FOOT CANDLES	
STRUCTURAL BAY SIZES	
SPEED BAYS 60'	
STANDARD BAYS 50'D X 56'W	
	H.D. ASPHALT
	L.D. ASPHALT
	CONCRETE



PROJECT EAGER
OCALA SPECULATIVE BUILDING #2

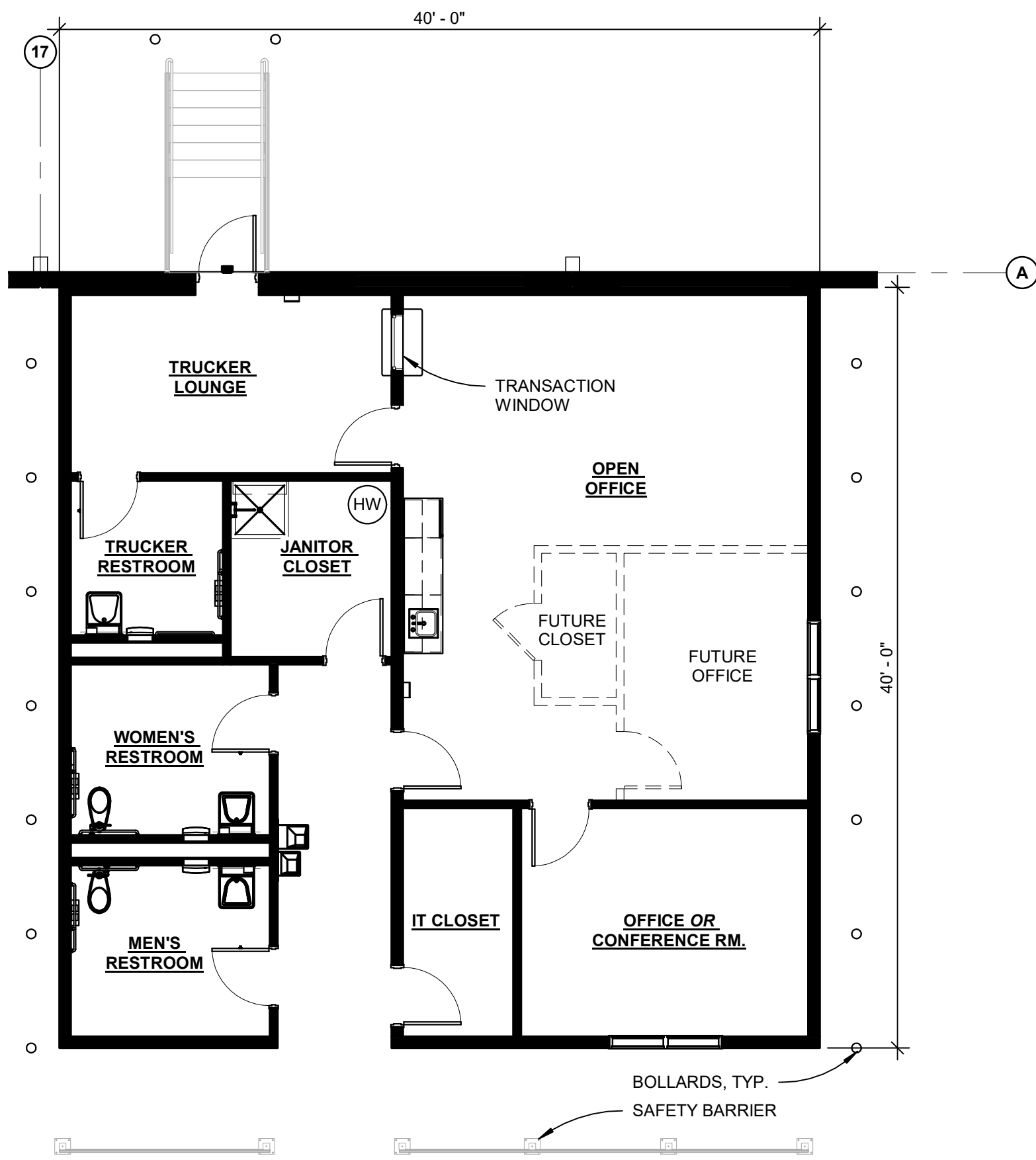
No.	Description	Date
A	FOR REVIEW	02 FEB 21
B	FOR MARKETING	12 AUG 21
C	FOR REVIEW	13 JAN 22

ENLARGED SITE PLAN

Project number: A18033.B **AG-102**

Drawn by: TJW Checked by: KMC Scale: 1" = 175'-0"

NOTICE: THIS DRAWING IS THE PROPERTY OF MCA ARCHITECTURE INC. AND IS FURNISHED WITH THE CONDITION THAT IT IS NOT TO BE CHANGED WITHOUT THE WRITTEN AUTHORIZATION OF MCA ARCHITECTURE INC. FURTHERMORE, THIS DRAWING IS NOT TO BE COPIED, REPRODUCED OR USED WITHOUT WRITTEN PERMISSION FROM MCA ARCHITECTURE INC. © 2022 MCA ARCHITECTURE 11/7/2022 1:08:38 PM



PROJECT EAGER
OCALA SPECULATIVE BUILDING #2

No.	Description	Date

ENLARGED OFFICE PLAN - BLDG 2

Project number: A18033.B **AG-104**

Drawn by: TJW Checked by: KMC Scale: 1 : 80