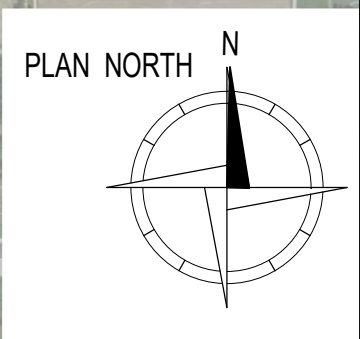
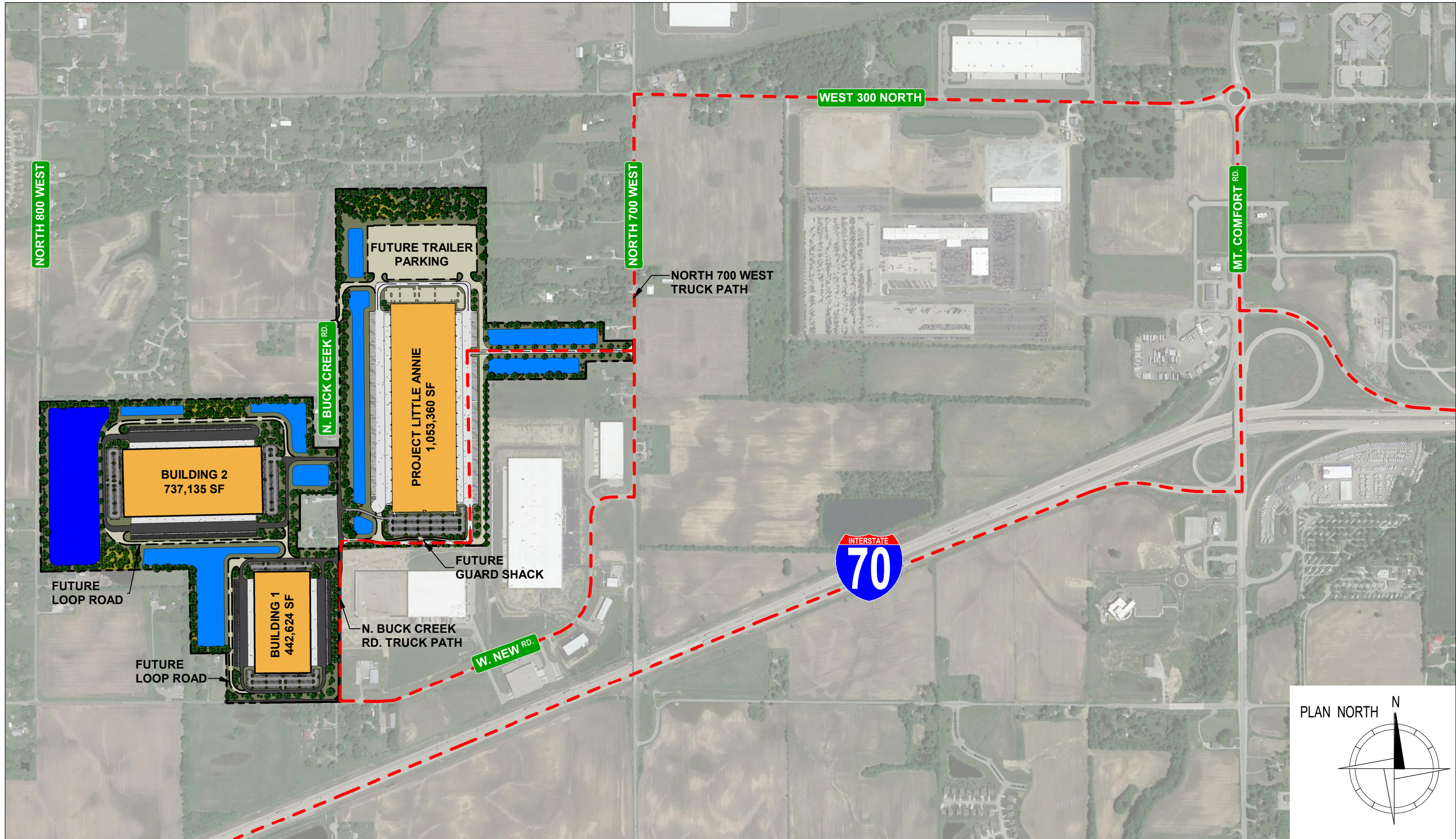


NOTICE: THIS DRAWING IS THE PROPERTY OF MCA ARCHITECTURE INC. AND IS FURNISHED WITH THE CONDITION THAT IT IS NOT TO BE CHANGED WITHOUT THE WRITTEN AUTHORIZATION OF MCA ARCHITECTURE INC. FURTHERMORE, THIS DRAWING IS NOT TO BE COPIED, REPRODUCED OR USED WITHOUT WRITTEN PERMISSION FROM MCA ARCHITECTURE INC.  
 © 2022 MCA ARCHITECTURE 1/13/2022 12:46:45 ITM



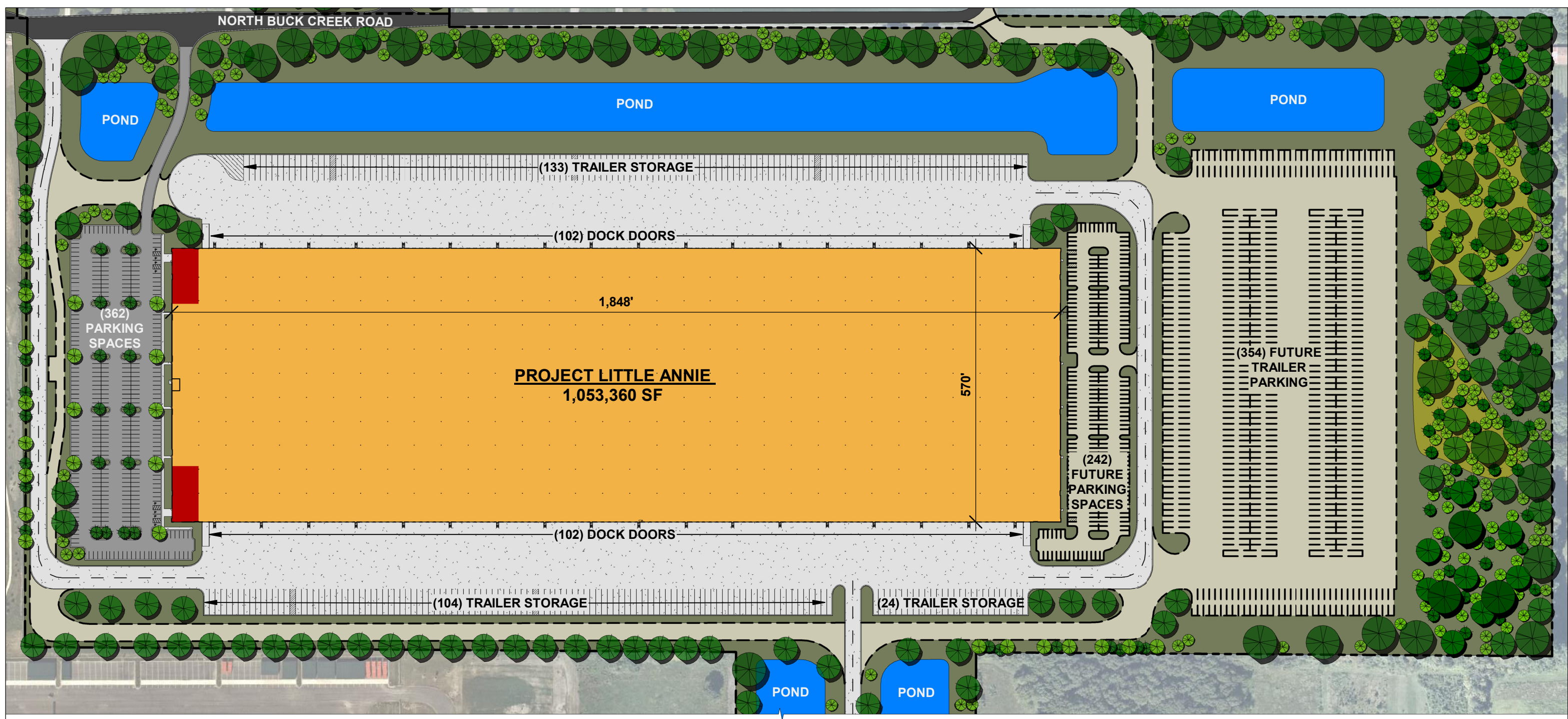
GREENFIELD INDUSTRIAL PARK  
SPECULATIVE BUILDINGS

No.	Description	Date
A	SQUARE FOOTAGE REVISION	30 DEC 20
B	FOR REVIEW	07 MAR 21
C	FOR MARKETING	02 SEP 21
D	FOR REVIEW	13 JAN 22

OVERALL SITE PLAN			
Project number:	A19047.0		AGS101
Drawn by: ACC	Checked by: KMC	Scale:	1 : 9500



NOTICE: THIS DRAWING IS THE PROPERTY OF MCA ARCHITECTURE INC. AND IS FURNISHED WITH THE CONDITION THAT IT IS NOT TO BE CHANGED WITHOUT THE WRITTEN AUTHORIZATION OF MCA ARCHITECTURE INC. FURTHERMORE, THIS DRAWING IS NOT TO BE COPIED, REPRODUCED OR USED WITHOUT WRITTEN PERMISSION FROM MCA ARCHITECTURE INC.  
 © 2022 MCA ARCHITECTURE 1/13/2022 12:46:56 ITM



**MCA**  
 ARCHITECTURE

**RED ROCK**  
 DEVELOPMENTS

GREENFIELD INDUSTRIAL PARK  
 SPECULATIVE BUILDINGS

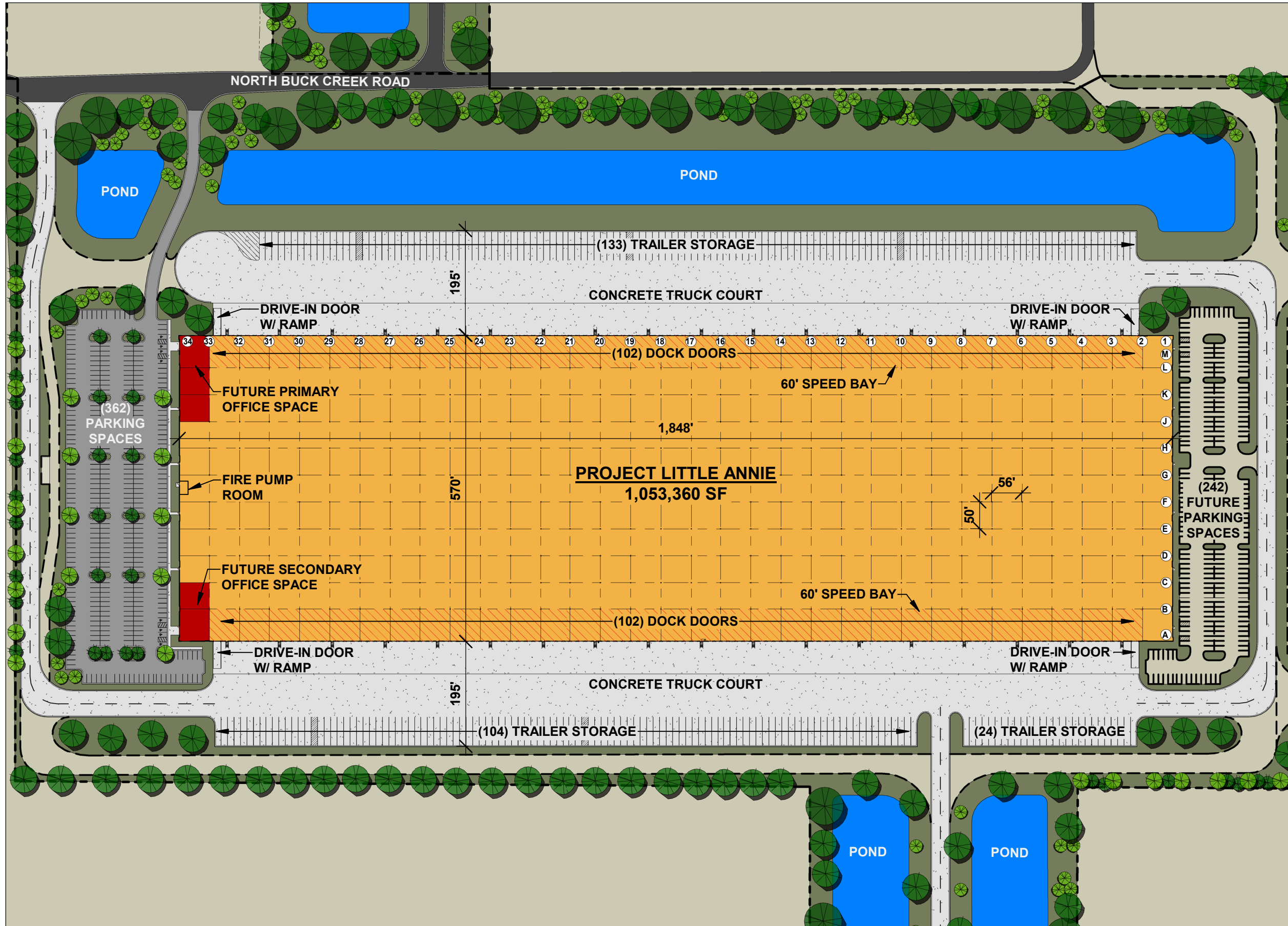
No.	Description	Date
B	FOR REVIEW	07 MAR 21
C	FOR MARKETING	02 SEP 21
D	FOR REVIEW	13 JAN 22



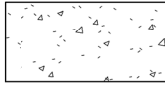
**OVERALL BUILDING 3 SITE PLAN**

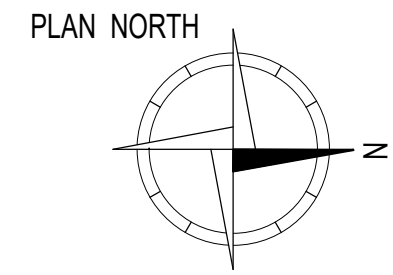
Project number: A19047.0  
 Drawn by: BBH    Checked by: KMC  
 Scale: 1" = 200'-0"  
**AGS104**



NOTICE: THIS DRAWING IS THE PROPERTY OF MCA ARCHITECTURE INC. AND IS FURNISHED WITH THE CONDITION THAT IT IS NOT TO BE CHANGED WITHOUT THE WRITTEN AUTHORIZATION OF MCA ARCHITECTURE INC. FURTHERMORE, THIS DRAWING IS NOT TO BE COPIED, REPRODUCED OR USED WITHOUT WRITTEN PERMISSION FROM MCA ARCHITECTURE INC.  
 © 2022 MCA ARCHITECTURE 1/13/2022 12:47:06 ITM



NOTES	
<b>CAR PARKING</b>	
PLAN WEST	362
FUTURE SPACES	242
<b>TOTAL POTENTIAL PARKING</b>	<b>604</b>
<b>TRAILER PARKING</b>	
PLAN NORTH	133
PLAN SOUTH	128
<b>TOTAL PROVIDING PARKING</b>	<b>261</b>
FUTURE SPACES	354
<b>TOTAL TRAILER POTENTIAL</b>	<b>615</b>
*TRAILER PARKING SIZED AT 12' WIDE X 55' DEEP	
<b>DOCK DOORS</b>	
PLAN NORTH	102
PLAN SOUTH	102
<b>TOTAL</b>	<b>204</b>
	H.D. ASPHALT
	L.D. ASPHALT
	CONCRETE







GREENFIELD INDUSTRIAL PARK  
SPECULATIVE BUILDINGS

No.	Description	Date
A	SQUARE FOOTAGE REVISION	30 DEC 20
B	FOR REVIEW	07 MAR 21
C	FOR MARKETING	02 SEP 21
D	FOR REVIEW	13 JAN 22

**ENLARGED SITE PLAN - BUILDING 3**

Project number:	A19047.0	<b>AGS105</b>
Drawn by: TJW	Checked by: KMC	